



Commercial Grade Truck Equipment SM

LIGHTS AND LIGHTING ACCESSORIES



| Model | Description |
|-------|---|
| LHH | Light Holes Punched - 4 in body, 4 1/2" diameter - High location for stop, tail, turn and back-up light. Not available with crane reinforcement. Per set. |

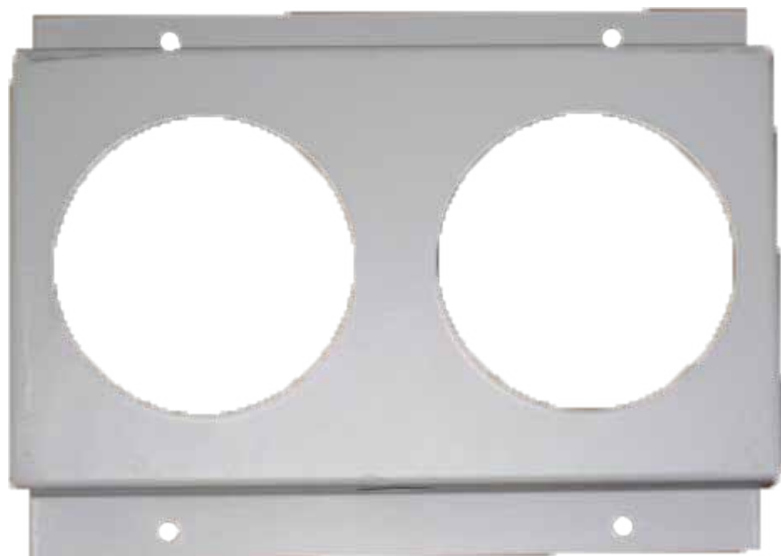


| Model | Description |
|-------|--|
| LHL | Light Holes Punched - 4 in body, 4 1/2" diameter - Low location for stop, tail, turn and back-up light. Not available with crane reinforcement. Per set. |



Commercial Grade Truck EquipmentSM

LIGHTS AND LIGHTING ACCESSORIES



| Model | Description |
|-----------|--|
| LITEMOUNT | Bracket Light Holes Punched - 2 in each Bracket, 4 1/2" diameter. For stop, tail, turn, back-up light, and license plate light. For external mounting on rear of body. Recommended for crane reinforced service body. Per set. |



| Model | Description |
|------------|--|
| LITEMOUNT3 | Bracket Light Holes Punched - 3 in each bracket 4 1/2" diameter holes. |



Commercial Grade Truck EquipmentSM

LIGHTS AND LIGHTING ACCESSORIES



| Model | Description |
|-------|---|
| LTK2 | Light Kit - Flush Mount, Rubber Grommet, Plug-in for bodies over 80" wide. Includes stop, tail, turn light, 2 back-up lights, license plate light, 3 RID lights, marker lights, and reflectors. Includes wiring harness for Ford Super Duty trucks. |



| Model | Description |
|----------|--|
| LTK LED2 | Light Kit - Flush Mount, Rubber Grommet, Plug-in for bodies over 80" wide. Includes LED stop, tail, turn light, 2 back-up lights, license plate light and bracket, Light bar with 3 RID lights, 2 round amber and 2 round red marker lights, and 2 reflectors. Includes wiring harness. NOTE: Optional adapter required. |



| Model | Description |
|----------|--|
| LTK LED4 | Light Kit - Flush Mount, Rubber Grommet, Plug-in for bodies over 80" wide. Includes LED stop, tail, turn light, 2 incandescent backup lights, license plate light and bracket, Light bar with 3 RID lights, 2 round amber and 2 round red marker lights, and 2 reflectors. Includes wiring harness. NOTE: Optional adapter required. |



Quick Reference

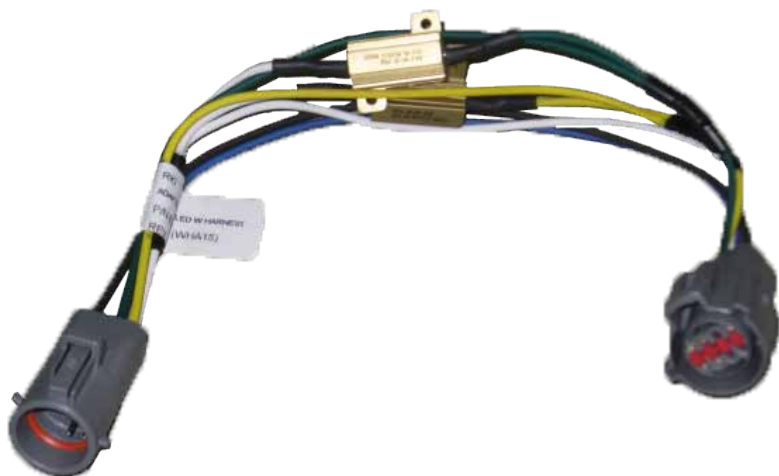
| Truck Make / Model | | (Adapter based on Light Kit) | |
|---------------------|--|------------------------------|--------------------|
| | | Incandescent Light Kit | LED Light Kit |
| FORD 2022 | Bed Removal | WHA29 | WHA29 WHA15 |
| | Box Delete | WHA18 | WHA18 WHA15 |
| | Cab Chassis (F250, F350, F450, F550 & F600) | WHA18 | WHA18 WHA15 |
| | Cab Chassis (F650 & F750) | Hard Wire | Hard Wire |
| GM 2022 | Bed Removal | WHA28 | WHA28 WHA15 |
| | Box Delete | WHA28 | WHA28 |
| | Cab Chassis (2500 & 3500) | WHA28 | WHA28 |
| | Cab Chassis (4500, 5500 & 6500) | Hard Wire | Hard Wire |
| RAM 2022 | Bed Removal | Hard Wire | Hard Wire WHA15 |
| | Box Delete | Hard Wire | Hard Wire WHA15 |
| | Cab Chassis (2500, 3500, 4500, 5500) | WHA21 | WHA21 WHA15 |

1. Bed Removal is when the bed is taken off the truck by the upfitter or customer
2. Box Delete is when the truck is ordered from the factory with the bed not included
3. "Pick-Up" trucks are 37CA, 40CA, 42CA, 56CA, and 57CA
4. "Cab-Chassis" trucks are 60CA, 84CA, 102CA, 108CA, and 120CA



Commercial Grade Truck Equipment SM

LIGHTS AND LIGHTING ACCESSORIES



| Model | Description |
|-------|--|
| WHA15 | Power Resistor Wiring Adapter - from RKI wiring harness (WHW) for LED light installations. Refer to adapter listings for more details.. |

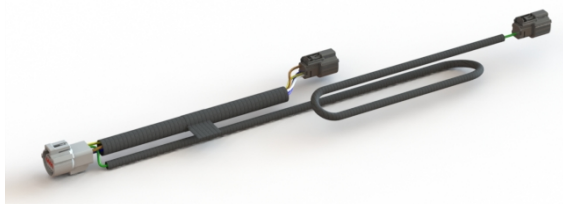


| Model | Description |
|-------|---|
| WHA18 | Wiring Adapter Kit – from RKI wiring harness (WHW) to 2017 Ford Super Duty Pickups and 2002 and later Ford Super Duty Cab Chassis. Required for incandescent or LED light kits. |

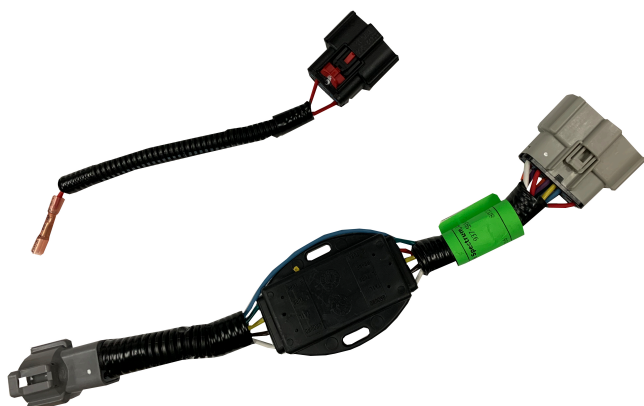


| Model | Description |
|-------|--|
| WHA21 | Wiring Adapter Kit – from RKI wiring harness (WHW) to Dodge 2007 and later Cab Chassis. Adapter WHA15 also required for LED light Installations. |

NOTE: Due to current Dodge light design RKI is unable to offer a direct plug-in adapter for 2007 and newer Dodge factory box-on Pickups, contact Dodge for instructions on how to wire these vehicles.



| Model | Description |
|-------|--|
| WHA28 | <p>Wiring Adapter Kit - 2020 GM (pick ups and chassis cab) (Left=Black and Right=Black) to WHW wiring harness (round).</p> <p>NOTE: Truck Dealer reprogramming may be required for pick up bed removal applications.</p> <p>Adapter WHA15 also required for LED light installations.</p> |



| Model | Description |
|-------|--|
| WHA29 | <p>Wiring Adapter Kit - 2020 Ford pick up bed removal (Grey rectangular) to WHW wiring harness (grey round).</p> <p>Adapter WHA15 also required for LED light installation on pick up bed removals.</p> <p>The smaller harness with black rectangular 12 pin plug is only needed if truck is equipped with Blind Spot Information Systems.</p> |

| Model | Description |
|-------|--|
| WHW | <p>Wiring Harness, Wide Bodies – direct plug-in harness for 2008 Ford Super Duty. WHW harness is included in LTK2, LTK LED2 & LTK LED4 light kits or can be purchased separately.</p> <p>NOTE: Optional adapters required for direct plug-in for Ford Super Duty Cab Chassis, Dodge and GM applications.</p> |



Commercial Grade Truck EquipmentSM

LIGHTS AND LIGHTING ACCESSORIES



| Model | Description |
|-------------|--------------------------------------|
| CMPTLGT | Dome light for compartment. |
| INSTCMPTLGT | Install dome light. Per compartment. |

LED Strip Lighting Kits



| Model | Application |
|------------|--|
| BLTKLED60 | 40" - 60" CA bodies – 6 compartments |
| BLTKLED84 | 84" CA bodies – 8 compartments |
| BLTKLED60T | 40" - 60" CA top opening bodies- 6 compartments and 2 top opening compartments |
| BLTKLED84T | 84" CA top opening bodies – 8 compartments and 4 top opening compartments |

Each kit Contains:

Easy to install adhesive backed IP 65 rated LED light strips - (one strip for each vertical and horizontal compartment).

Door activated switches, which turn the light on when the compartment door is opened,

Brackets to attach switches to the service body and connectors for easy joining of wires.

For service bodies with the #2 door arrangement, an additional strip may be ordered for optimal illumination, consult factory for pricing.